

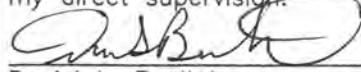
Corners to be Indexed

NE 20-106-40

STATE OF MINNESOTA, } ss.
COUNTY OF MURRAY, }

I hereby certify that the within Instrument
was filed in this office for record on the
5TH day of FEBRUARY A.D. 20 19
at 9:00 o'clock A. M., and was duly
recorded as Document No. _____

I hereby certify that this document and the data
contained herein was prepared by me or under
my direct supervision.



Daniel L. Buettel

License No. 43844

1/31/2019
Date

Lucy C. Larson
County Recorder

CERTIFICATE OF LOCATION OF GOVERNMENT CORNER

Land survey monuments situated in Section 20, Township 106, Range 40, 5TH P.M.

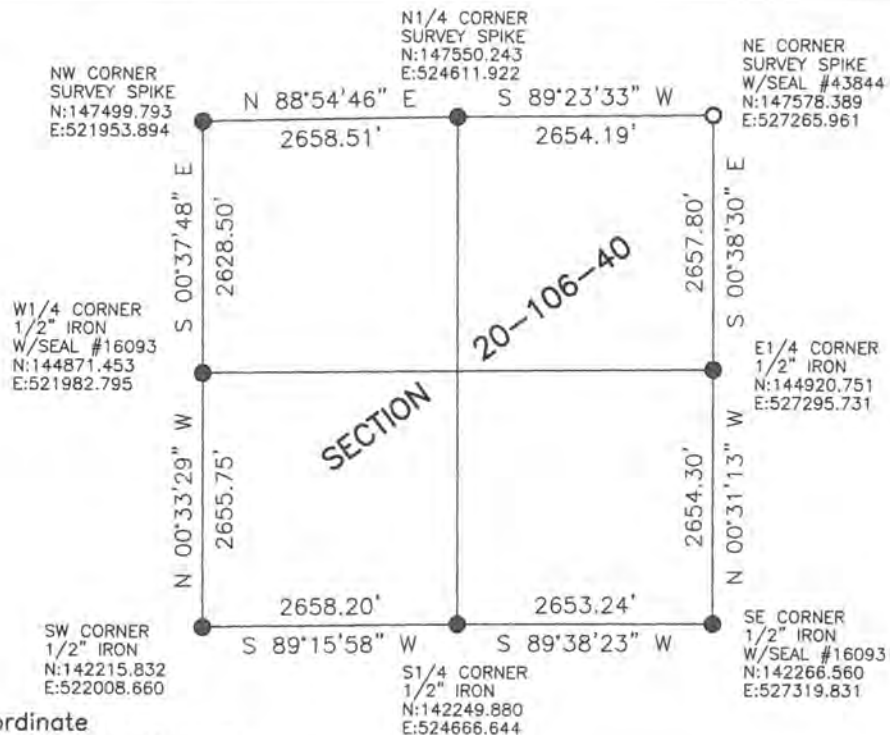
STATE OF MINNESOTA, County of MURRAY

STATEMENT OF EVIDENCE:

- 1861 - Original government survey.
- 1899 - Woolstencraft set a stone at the corner.
- 1963 - Murray County Highway Department found stone.
- 1996 - Madsen Land Surveying found an iron, set a 3/4" pipe over it.



- FOUND MONUMENT
- SET MONUMENT



Minnesota State Plane Coordinate
System Murray County Datum NAD83 (1996)

Statement of Evidence

NE 20—106—40

In 1861, D.W. Wellman and S.S. Smoot did the original subdivision of the township.

On November 1, 1899, W.J. Woolstencraft set a stone at the corner.

In 1963, the Murray County Highway Department found a stone at the corner.

On a survey dated August 13, 1996, Madsen Land Surveying found an iron pin at the corner. The set a 3/4" pipe over it.

On May 30, 2018, Bueltel-Moseng Land Surveying set a survey spike with seal #43844 at the corner using the information from the 1996 Madsen survey.